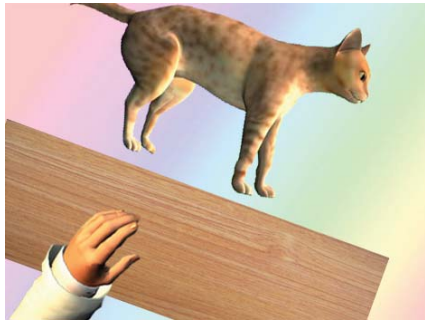


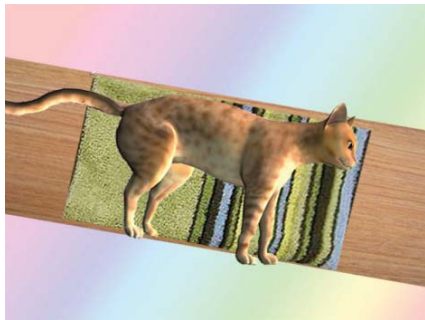
Back Fracture



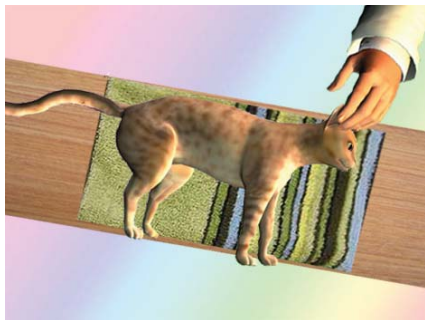
1 Prepare to transport your cat very carefully making sure not to move very much as any bump can cause pain to your cat



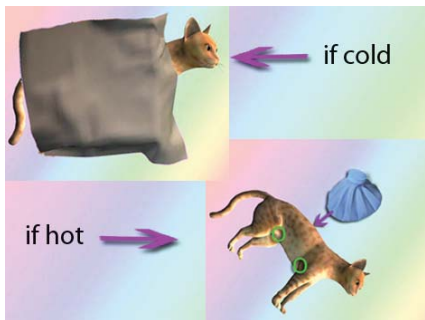
2 Get a board sturdy enough to hold your pet's weight without breaking



3 Set the board next to your cat and gently slide a sheet or towel under her and then pull the sheet horizontally onto the board



4 Transport to the nearest vet making sure someone sits with the cat to keep her calm and still



5 Treat if signs of shock. Cover with a WARM blanket if COLD. Apply cold compresses to the chest and abdomen if HOT



DO NOT let your cat stand up or walk



DO NOT move the cat too much, keep her as still as possible



Use a giant blanket, plywood as a board to transport your cat



Try to keep your cat calm by speaking with soothing words or gently stroking her



Signs of shock may include weakness, collapse, pale or grey colored gums, irregular breathing, high heart rate, weak pulse and body temperature changes (e.g. very cold or very hot)