

Leg Fracture

Check ABC's of life support



1

Check ABC's of life support--Airway, breathing, circulation. Can you see, feel, or hear your pet breathing? If your pet is not breathing, begin rescue breathing immediately.



2

If your pet is non-responsive and has stopped breathing, be prepared to give artificial respiration by closing your cat's mouth with one hand and gently breathe into your cat's nostrils.



10-20 breaths per minute

3

Administer 10-20 breaths per minute for cats. With each breath, one should see the chest slightly rise. Avoid breathing too hard or over-inflating the lungs.



Keep breathing

4

Keep breathing for your cat until she is able to breathe on its own or until veterinary help is available.



5

Check that your cat's heart is still beating by feeling for the heart on your cat's chest and/or feeling for your cat's pulse. (The pulse is easily felt in the femoral artery located on the inside of the thigh.)



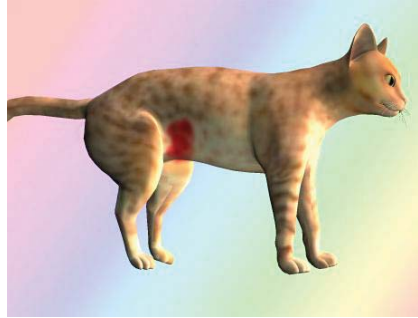
6

If no pulse or heart beat is felt, begin CPR.



7

Check for bleeding.



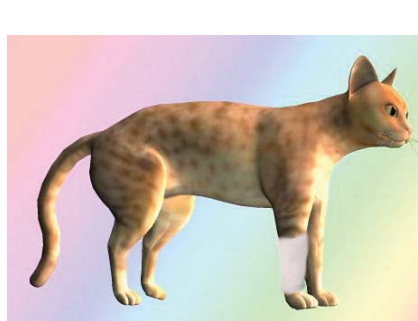
8

Apply a clean cloth or gauze pad to the bleeding wound with firm direct pressure. If blood soaks through the pad, apply another pad over it and apply pressure. Do not remove the pad or cloth underneath it.

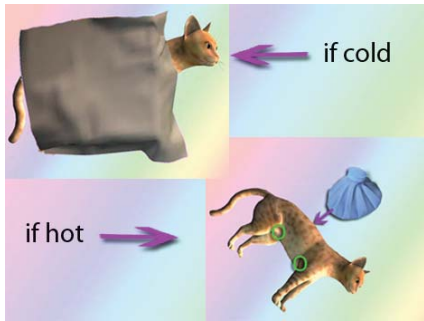


9

If bleeding is not well controlled, one can apply a pressure bandage by wrapping the wound with several layers of gauze and then using an elastic bandage, duct tape, or masking tape over it to maintain pressure.

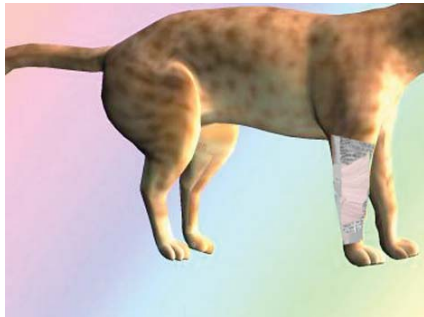


Leg-Fracture



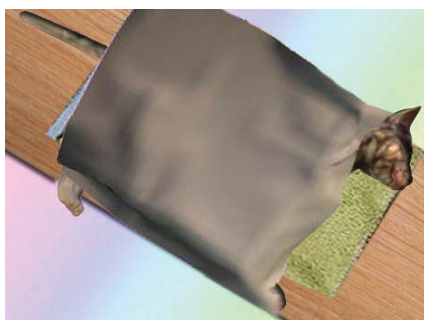
10

Treat and check for signs of shock. (Signs of shock include weakness, pale or grey gums, body temperature changes, & rapid breathing.) Slightly raise your pet's back end to increase blood flow to the heart. Keep your pet warm with a blanket if cold. If your pet is hot, cool down with cold compresses to the chest and abdomen.



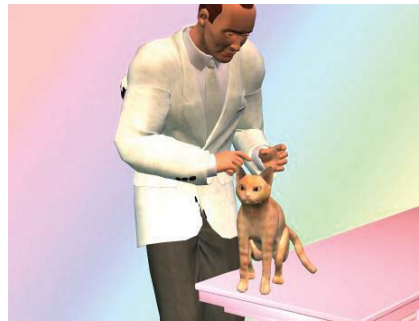
11

Check for broken bones. If there is an obvious injury occurring below the elbow joint (located on the front limbs) or below the knee joint (located on the rear limbs), a splint can be applied to temporarily stabilize the injured limb until veterinary help is available. Split the injured limb by securing it with a firm material such as a rolled up newspaper or magazine placed on the inside and outside of the limb. Secure the splint with duct tape or rope.



12

Prior to transport if available, you can provide extra stabilization by using a plywood or solid object as a stretcher. Ensure your cat does not fall off by securing her to the board with tape or rope.



13

Transport your cat to the nearest veterinary hospital.



DO NOT worry about splinting the leg if she is in shock or unconscious; instead get her to the vet immediately



Be aware of your personal safety. Animals in pain will often bite or hurt their well-meaning owner. Be prepared to restrain your cat by wrapping it in a towel so that you can administer first aid care



DO NOT attempt to apply a splint to a broken bone without proper restraint



DO NOT attempt to splint a broken bone if you are unsure where the injury is as splints placed incorrectly can cause more injury



Try to keep your cat calm by speaking with soothing words or gently stroking her



Signs of shock may include weakness, collapse, pale or grey colored gums, irregular breathing, high heart rate, weak pulse and body temperature changes (e.g. very cold or very hot).



You may also use saran wrap to hold the newspaper splint together