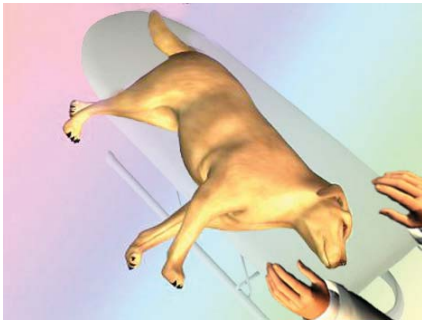


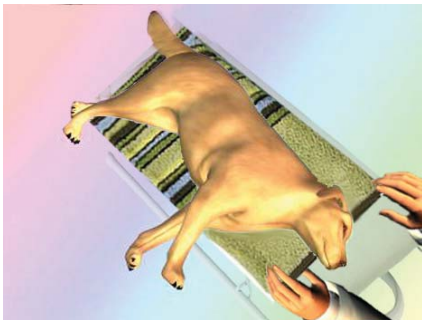
## Back Fracture



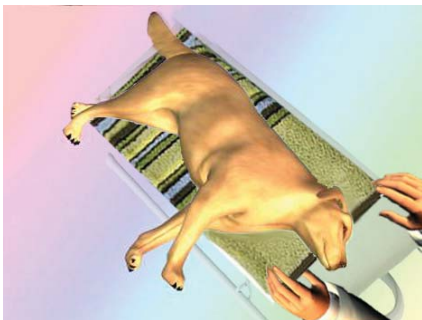
**1** Prepare to transport your dog very carefully making sure not to move very much as any bump can cause pain to your dog



**2** Get a board sturdy enough to hold your pet's weight without breaking.



**3** Set the board next to your dog and gently slide a sheet or towel under him and then pull the sheet horizontally onto the board.



**4** For a larger dog use an ironing board or plywood and have 2 people move the dog by lifting at the shoulders and other person lift at the hips.



**5** Transport to the nearest vet making sure someone sits with the dog to keep him calm and still



**6** If your dog is going into shock, cover him with a blanket to keep him warm



DO NOT let your dog stand up or walk



DO NOT move the dog too much, keep him as still as possible.



Use a giant blanket, plywood or an ironing board to transport your dog



Try to keep your dog calm by speaking with soothing words or gently stroking him



Signs of shock may include weakness, collapse, pale or grey colored gums, irregular breathing, high heart rate, weak pulse and body temperature changes (e.g. very cold or very hot)