

**Poison - Acids
Bleach, Drain Cleaner**



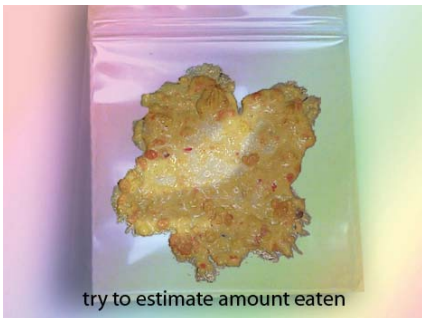
1 Try to identify the toxic substance collect any empty bottles or containers, and check for distinctive odors



2 Look for traces in or around the mouth to identify the substance



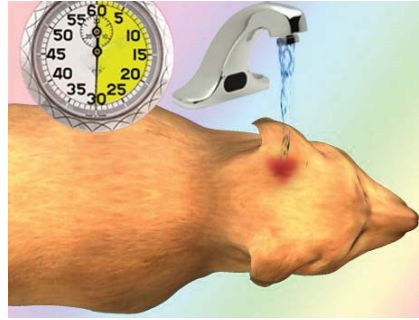
3 If your dog vomits, note carefully the appearance of the vomit and collect them in a plastic baggy for identification



4 Try to estimate the amount that the pet has eaten



5 If the eye was exposure flush eyes with water or sterile saline for 30 minutes.



6 If the skin was exposed then flush the area with running cool water for 30 minutes



7 Call the ASPCA Animal Poison Control Center hotline which operates 24 hours a day, 7 days a week, at (888) 426-4435 there is a \$60 consultation fee, payable by credit card, for this service and this includes follow-up consultation should you or your vet need further assistance with your pet's case



DO NOT induce vomiting or give activated charcoal



Wear gloves while helping your dog to avoid contact with the acid



If your animal is having seizures, losing consciousness, is unconscious or is having difficulty breathing, telephone ahead and bring your pet immediately to your local veterinarian or emergency veterinary clinic



Note any symptoms that your pet may be having



ASPCA Animal Poison Control Center hotline which operates 24 hours a day, 7 days a week, at (888) 426-4435